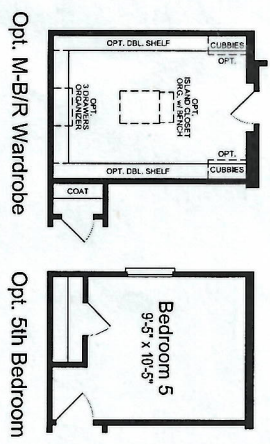
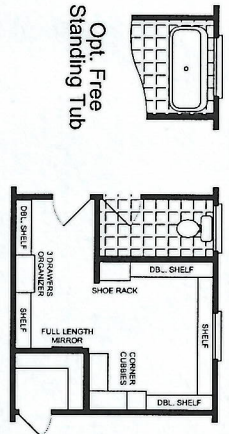


# VISTA RIDGE

By Palm Harbor Homes

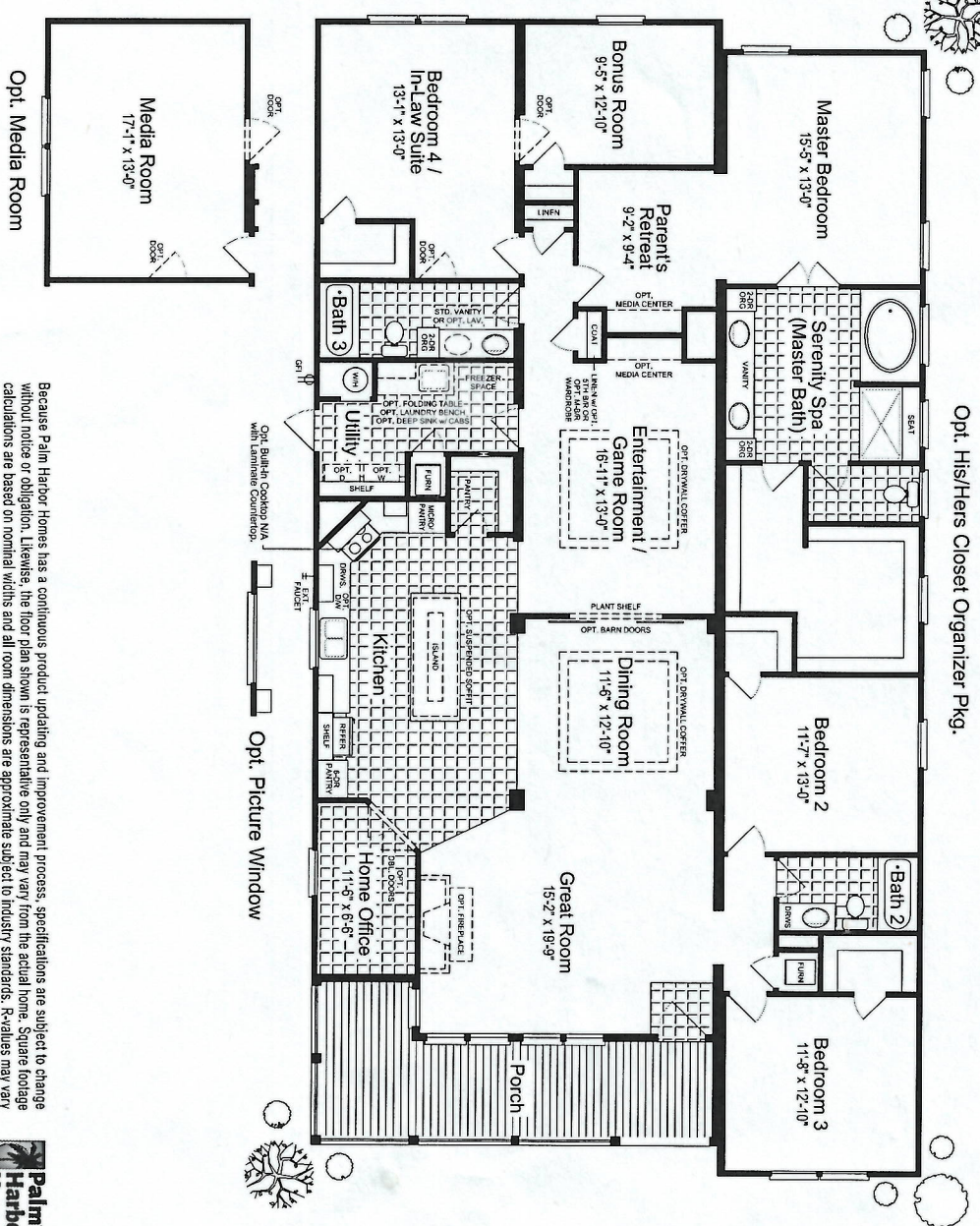
335,000  
+ 26,800 TAX

**The "La Belle"**  
**Model: 320VR41764D**  
 Add "M" to model # for MOD  
 2897 Square feet  
 41'-0" x 76'-0"  
**4 Bedrooms / 3 Baths**  
 Austin, Texas    Date: 11/07/2023



- Key Features:**
- \* Wrap-Around Porch
  - \* Entertainment Room
  - \* Bonus Room
  - \* Walk-In Closets (All Bdrms)
  - \* Serenity Spa
  - \* Home Office
  - \* Kitchen Pantry
  - \* Large Kitchen Island

Copyright © 2021 by Palm Harbor Homes, Inc.  
 All Rights Reserved.



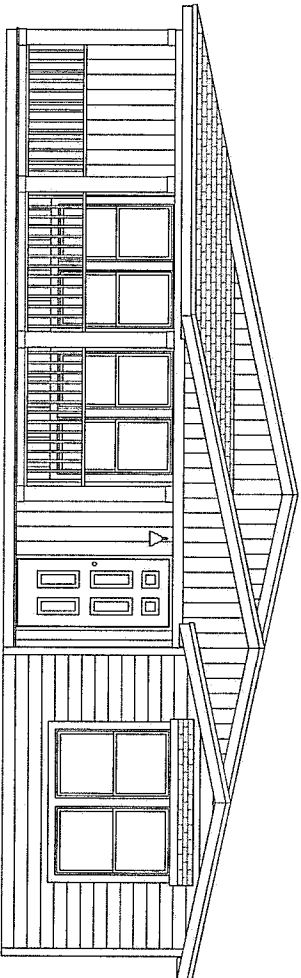
Because Palm Harbor Homes has a continuous product updating and improvement process, specifications are subject to change without notice or obligation. Likewise, the floor plan shown is representative only and may vary from the actual home. Square footage calculations are based on nominal widths and all room dimensions are approximate subject to industry standards. R-values may vary in compressed areas. Some transportation components may have been recycled after close inspection for safety and appearance.



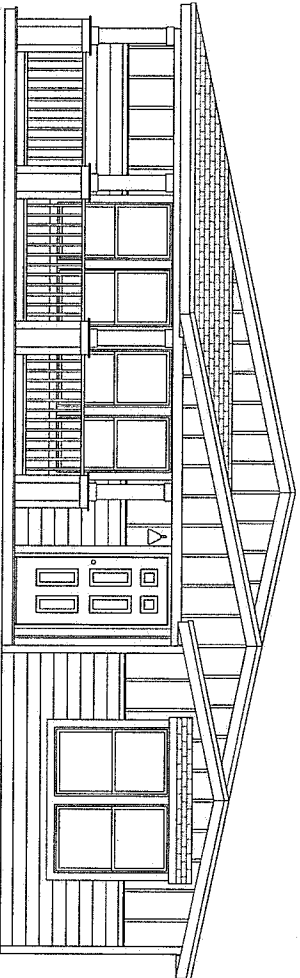


# VISTA RIDGE

By Palm Harbor Homes



STANDARD VISTA RIDGE EXTERIOR  
(SHOWN WITH OPT. SHED DORMER)



\* OPT. LAP & VERTICAL BOARD & BATT EXTERIOR  
(SHOWN WITH OPT. SHED DORMER)

## The "La BELLE"

Model: 320VR41764D

Austin, Texas

Date: 09/02/2021



Because Palm Harbor Homes has a continuous product, updating and improvement process, specifications are subject to change without notice or obligation. Likewise, the floor plan shown is representative only and may vary from the actual home. Square footage calculations are based on nominal widths and all room dimensions are approximate, subject to industry standards. R-values may vary in compressed areas. Some transportation components may have been recycled after close inspection for safety and appearance.

Copyright © 2021 by Palm Harbor Homes, Inc.  
All Rights Reserved.

